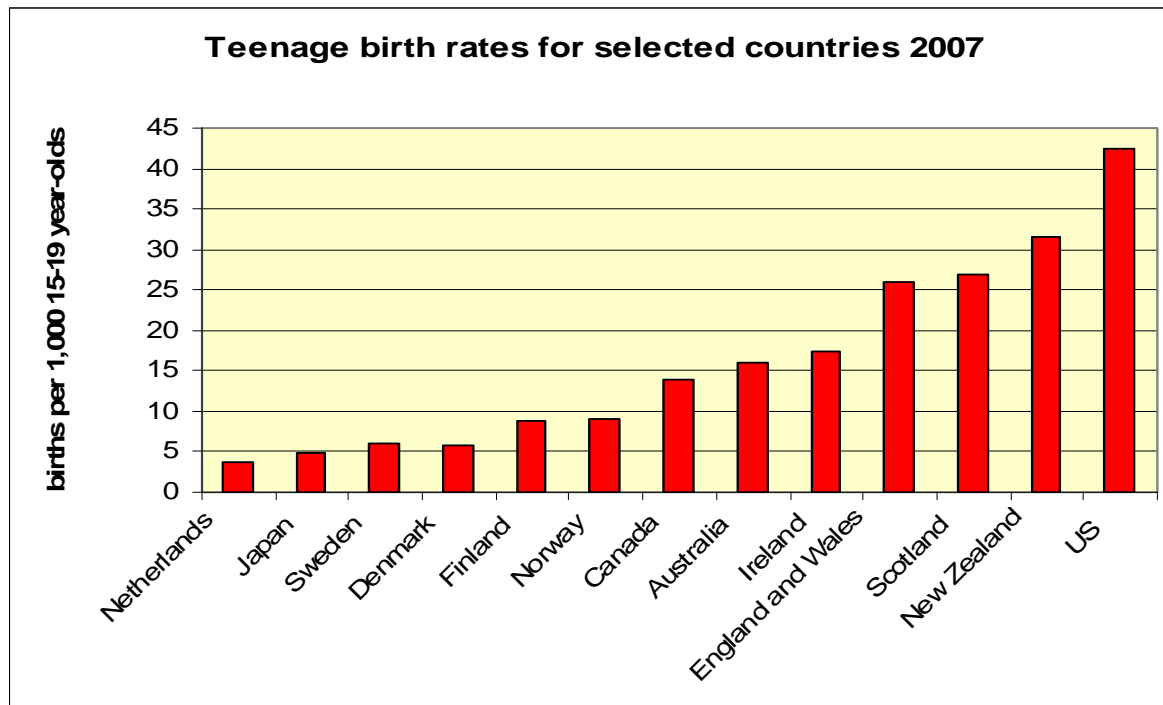


Should New Zealand adopt the
sole parent benefit policies of
other countries?

Teenage birth rates for selected countries



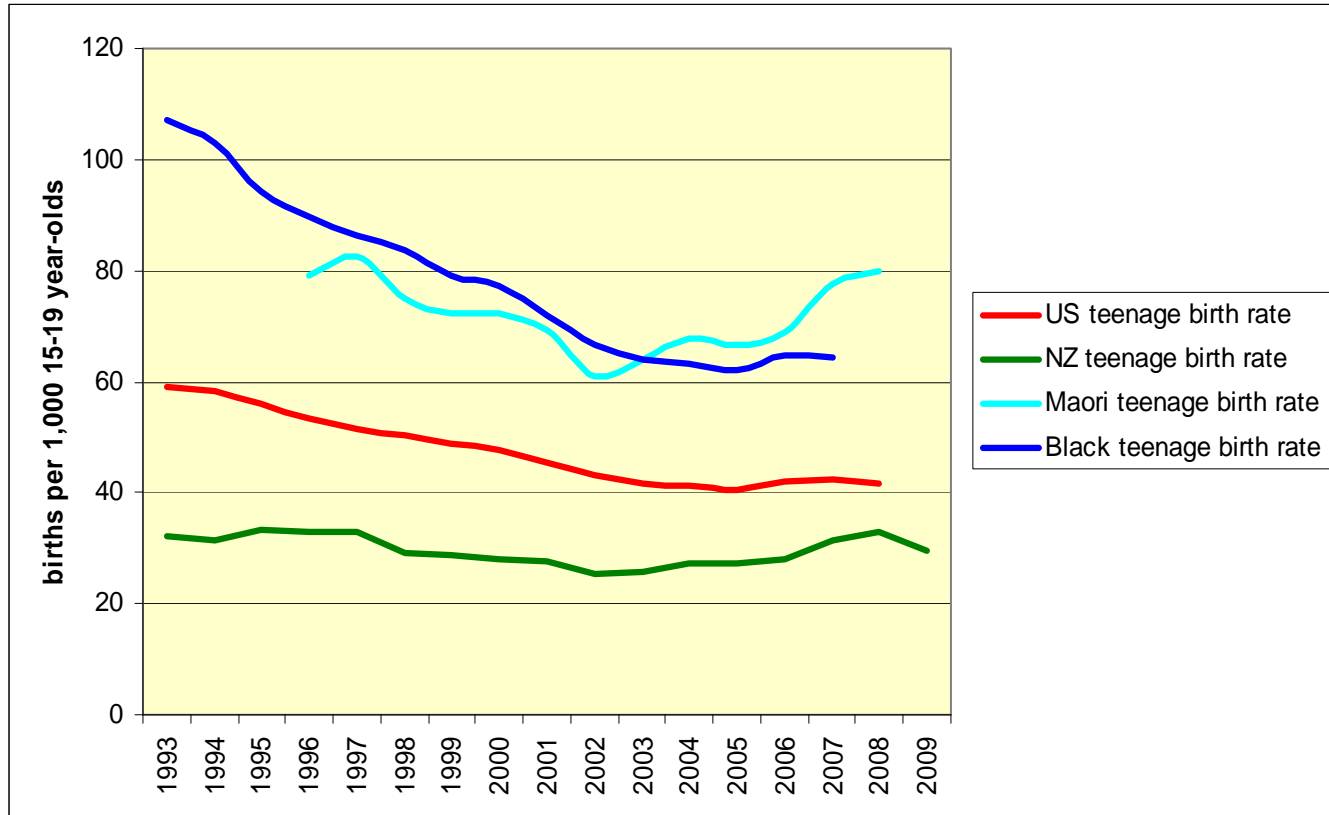
Who stays longest on the DPB?

- “Children of caregivers aged under 20 have the lowest probability of leaving benefit.”
- “...analysis of factors associated with long benefit durations highlights having first contact with the benefit system at birth; living with a sole caregiver at first contact; and first appearing with a primary beneficiary who was female, Maori or aged under 20.”

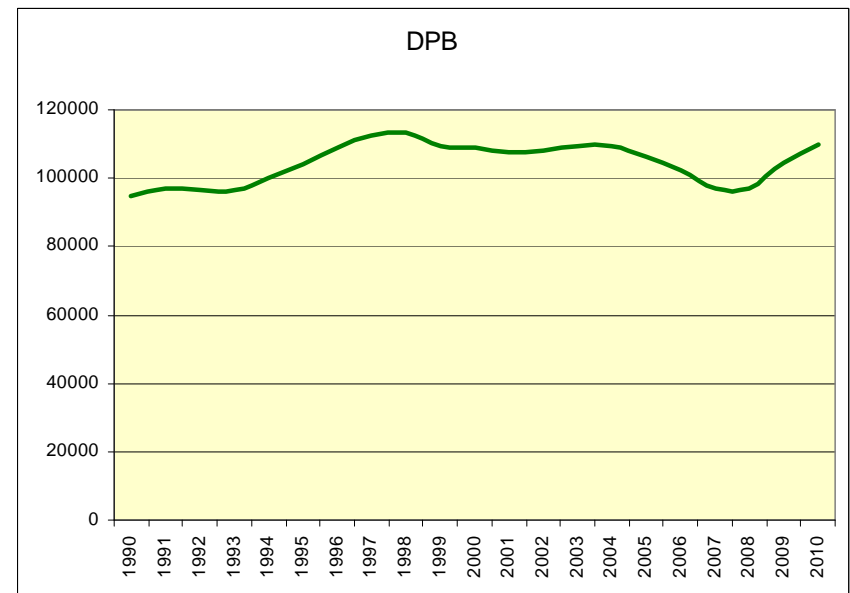
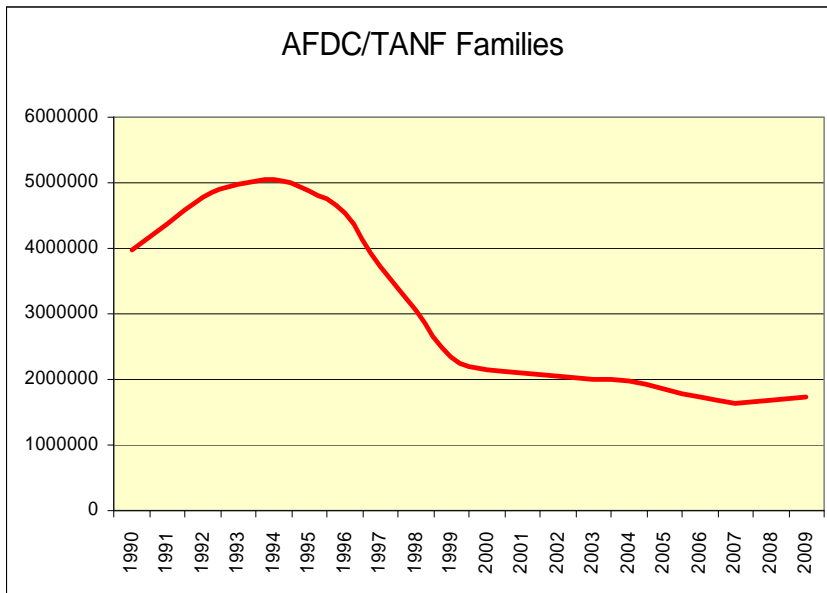
Policy focus on teenage birth rate

- Minors [under 18] who have dependent children are required to stay in school and live with their parents or responsible adult to receive federal TANF dollars. States are responsible for assisting in locating adult-supervised settings for teens who cannot live at home
- TANF funds can be used for contraceptive access and information, youth development programmes, teenage parent home visitation and school-based childcare

General and minority teenage birth rates in NZ and the US



Sole parents reliant on welfare



Australia

- Post-2006 applicants on a Parenting Payment are part-time work-tested when youngest child turns 6 and transferred to a Newstart Allowance when youngest child turns 8
- Pre-2006 applicants may remain on Parenting Payment till youngest is 16 but are work-tested when youngest turns 7

The United Kingdom

- Sole parents on Income Support are transferred to a Jobseeker Allowance and work-tested when youngest child turns 10 (to reduce to 7 in October 2010)